



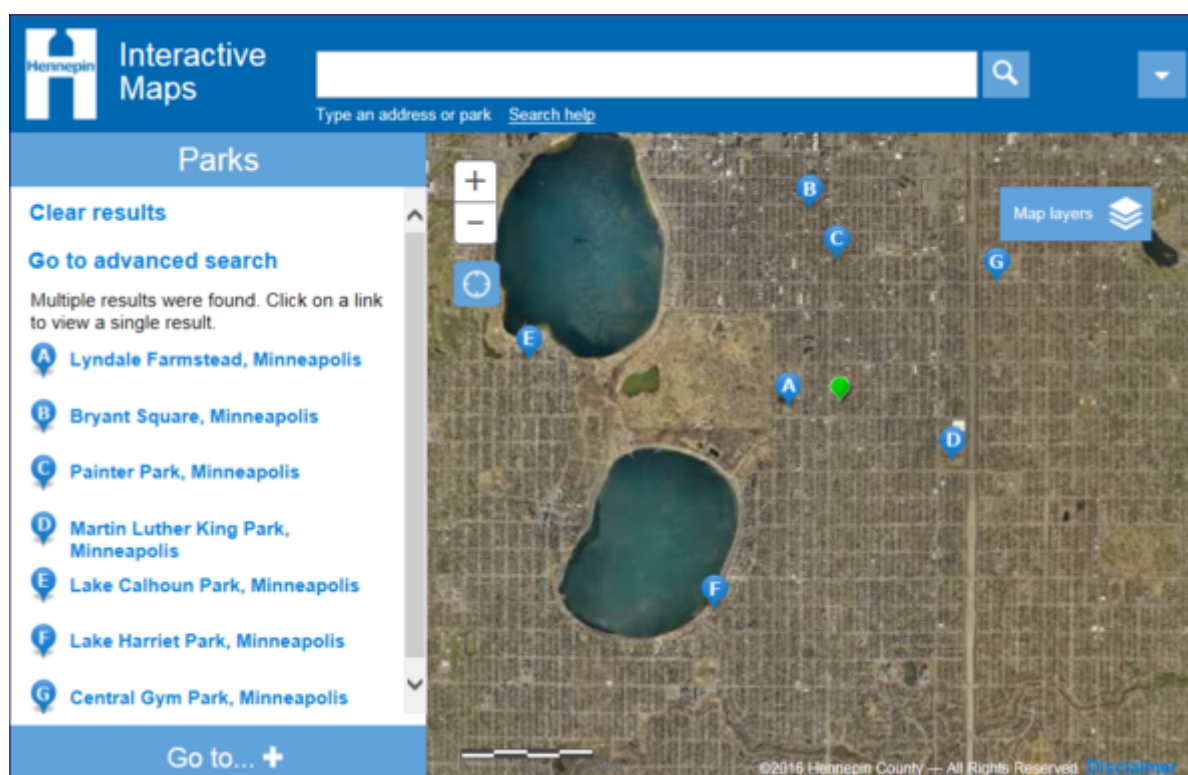
Map a fun, safe and nutritious summer!

Hennepin County sent this bulletin at 07/05/2016 08:00 PM CDT

Hennepin GIS notes

Summer Applications

Whether you are going for a swim or looking to buy local produce, these applications will help you stay informed this summer in Hennepin County. The information used to create these maps has been updated for 2016 where possible.



[Water quality at swimming beaches](#)

Each summer Hennepin County Public Health and other agencies sample and analyze the water at numerous beaches throughout the county. This application shows the status of the beaches based on the levels of E. coli.

[Find park facilities in your neighborhood](#)

Get outside and enjoy the warm weather! This application shows amenity information for nearly 1,000 parks within Hennepin County.

[Get fresh food from a farmer's market](#)

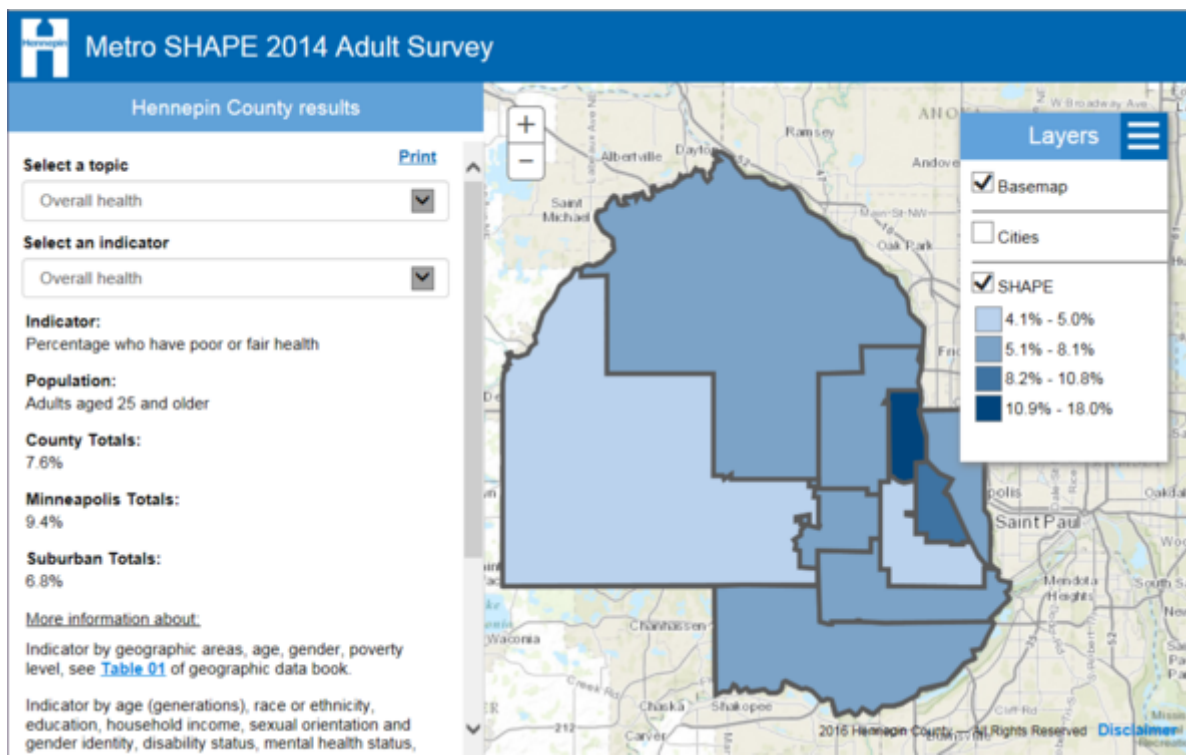
This application helps to promote Healthy Eating initiatives at Hennepin County by providing easy information on farmer's markets, mini-markets, and farm stands.

[Cool options to escape the heat](#)

Residents looking to escape the extreme heat can use this application to locate cool options within the county.

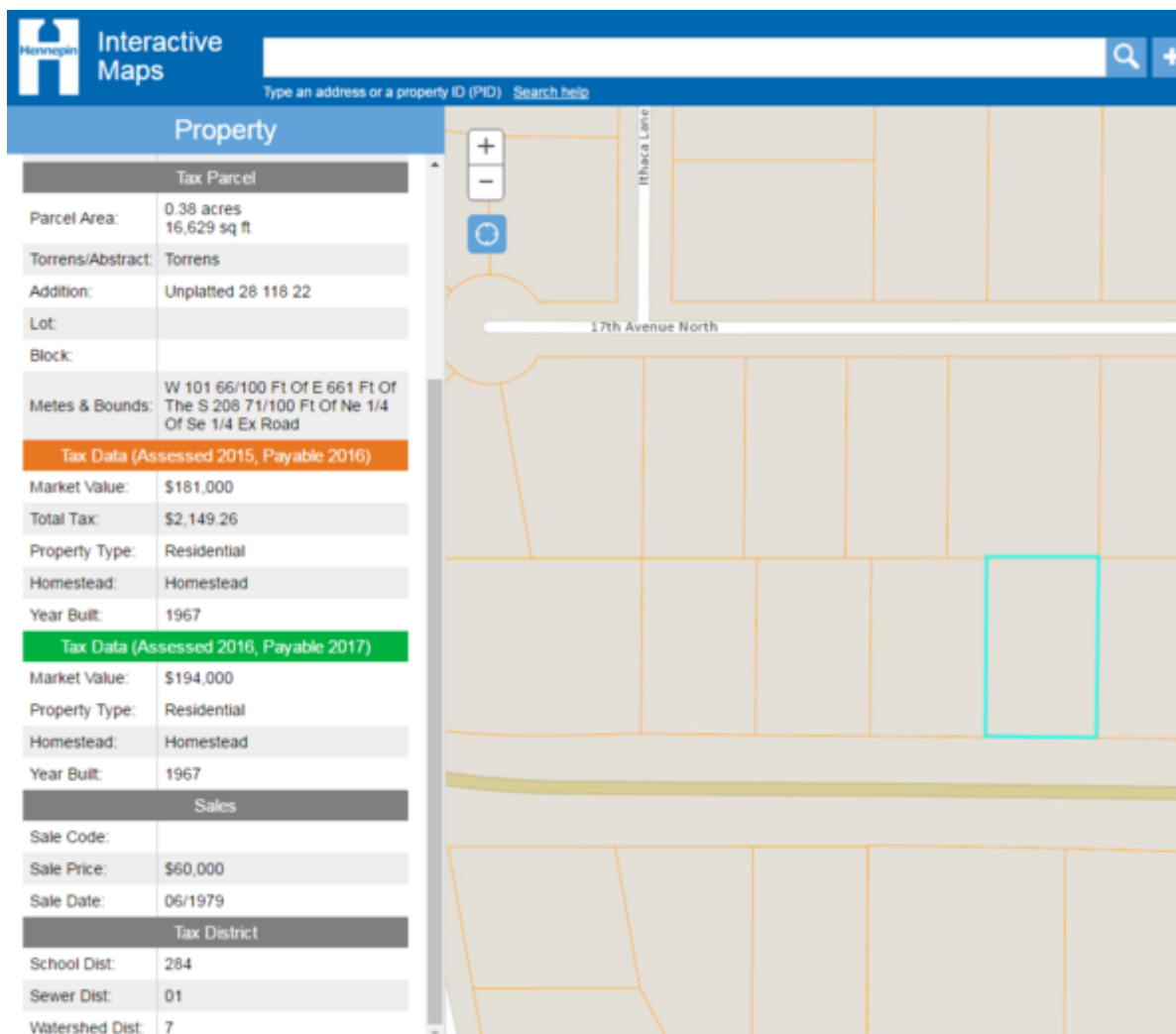
[Metro SHAPE 2014 Adult Survey](#)

SHAPE is an ongoing public health surveillance and assessment project of the Hennepin County Human Services and Public Health Department to periodically survey and report on the health of children and adults in Hennepin County. The survey is broken down into geographic regions and includes questions on such topics as obesity, tobacco use, physical activity, emotional distress, and disabilities.



Enhancements to Property Interactive Map

Additional tax information is now available in the Property Interactive Map. The new tax information is color coded to match the corresponding information on the Hennepin County tax notices property owners receive each year.



Hennepin County
 GIS Office | gis.info@hennepin.us
 612-596-9484



Follow us on [Twitter](#)

SUBSCRIBER SERVICES:

INTERACT WITH HENNEPIN COUNTY:

[Unsubscribe/update preferences](#) | [Contact Hennepin](#) | [GovDelivery help](#) | [Register for Citizens Academy](#)

